

---

Project Examples



## **SPORTS PROJECT HISTORY**

**VIDEO, SCOREBOARDS, REPLAY, SOUND & BROADCAST  
SYSTEMS**

---

## Project Examples

**KOVALCHICK CONVENTION AND  
ATHLETIC COMPLEX - INDIANA  
UNIVERSITY OF PENNSYLVANIA  
INDIANA, PENNSYLVANIA  
2011**

- Replay Control & Production Systems
- Scoreboard & LED Displays



**LOYOLA UNIVERSITY OF CHICAGO  
CHICAGO, ILLINOIS  
2011**

- Broadcast Cabling Systems
- Scoreboard & LED Displays



**MEMORIAL ATHLETIC AND  
CONVOCAION CENTER  
KENT STATE UNIVERSITY  
KENT, OHIO  
2011**

- Arena Sound System



---

## Project Examples

### **STILE FIELD HOUSE** **UNIVERSITY OF AKRON**

AKRON, OHIO  
2012

- Sound Systems



### **PEGULA ICE ARENA** **PENN STATE UNIVERSITY**

UNIVERSITY PARK, PENNSYLVANIA  
UNDER CONSTRUCTION

- Broadcast Cabling
- Scoreboard & LED Displays
- Systems Interface to the Scoreboard Control Room at the Bryce Jordan Center



---

## Project Examples

**THE FOLLOWING PROJECTS WERE COMPLETED UNDER THE PATLIN ELECTRONICS BANNER AND ARE EXAMPLES OF THE TYPES OF PROJECTS THAT WE HAVE BEEN ASKED TO DESIGN.**

BRIEF HISTORY: DSM & ASSOCIATES, LLC HAS BEEN A SUB-CONSULTANT TO PATLIN FOR MANY YEARS.

PATLIN ELECTRONICS CEASED OPERATIONS IN SEPTEMBER OF 2007. PRINCIPALS FROM PATLIN AND DSM & ASSOCIATES, LLC HAVE JOINED FORCES TO CONTINUE WORKING IN THE SPORTS VENUE INDUSTRY.

### **H. A. CHAPMAN STADIUM THE UNIVERSITY OF TULSA TULSA, OKLAHOMA 2008**

- Local Broadcast, Satellite Staging Areas
- Broadcast Cabling Systems
- Broadcast Truck Staging Areas



### **CLEVELAND CAVALIERS PRACTICE FACILITY CLEVELAND, OHIO 2006**

- Local Broadcast, Satellite Staging Areas
- Broadcast Cabling Systems
- Scoreboard & LED Displays



### **QUICKEN LOANS ARENA CLEVELAND, OHIO 2005**

- Replay Control & Production Systems
- Scoreboard & LED Displays
- Project Management





---

## Project Examples

### **CHARLOTTE ARENA**

**CHARLOTTE, NORTH CAROLINA**

2003-2005

- In-House Cable TV Systems
- NBA Public Relations Requirements & Camera Positions
- Replay Control & Production Systems
- Broadcast Cabling Systems
- Local Broadcast, Satellite Staging Areas
- Satellite Downlink Systems
- Radio Broadcast Facilities
- Video Coaching System
- Scoreboard & LED Displays
- NBA Recommended TV Host Studio

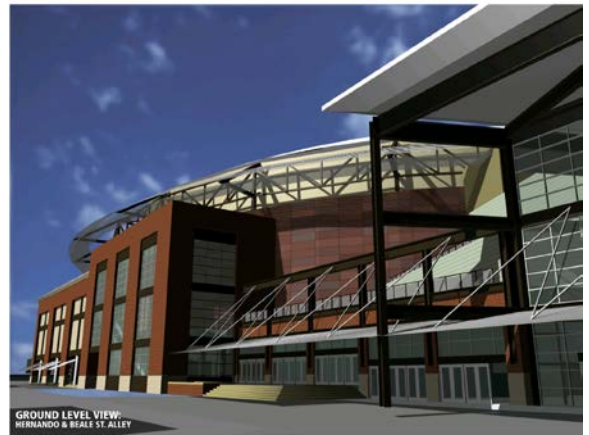


### **FEDEX FORUM**

**MEMPHIS, TENNESSEE**

2002-2004

- In-House Cable TV Systems
- NBA Public Relations Requirements & Camera Positions
- Replay Control & Production Systems
- Broadcast Cabling Systems
- Local Broadcast, Satellite Staging Areas
- Satellite Downlink Systems
- Video Coaching System
- Scoreboard & LED Displays
- NBA Recommended TV Host Studio



### **TOYOTA CENTER**

**HOUSTON, TEXAS**

2001-2003

- Replay Control Room. Serial Digital Standard Definition, 16:9 Aspect Ratio
- Live Broadcast Pre-Game & Post-Game Production Center. Standard Definition, 4:3/16:9 Aspect Ratio Serial Digital
- Radio Broadcast Control Room



---

## Project Examples

### **CONSECO FIELDHOUSE**

**INDIANAPOLIS, INDIANA**

1997-1999

- Replay Control Room, Serial Digital Standard Definition, 16:9 Aspect Ratio
- Broadcast Center. Serial Digital Standard Definition, 4:3/16:9 Aspect Ratio



### **MCI CENTER**

**WASHINGTON, D.C.**

1995-1997

- NBA Recommended TV Host Studio
- Interactive "Sport Seat"
- Replay Control & Production Systems
- Broadcast Cabling Systems
- Local Broadcast, Satellite Staging Areas
- Satellite Downlink Systems
- Video Coaching System
- Scoreboard & LED Displays
- In-House Cable TV Systems
- NBA Public Relations Requirements & Camera Positions



### **GUND ARENA**

**CLEVELAND, OHIO**

1992-1994

- In-House Cable TV Systems
- Broadcast Cabling Systems
- LFVD (Jumbotron) Control Room
- Videowall Control Room
- Radio Broadcast Control Room
- Local Broadcast/Microwave Site
- Local Broadcast/Newsgathering Staging
- Satellite Uplink Staging
- NBA-required camera positions
- Camera Sport Seats

